

Office Automation Suite Information Merger

Addovation Information Merger makes data from IFS an integrated part of your Word and Excel documents. The Information Merger module makes it possible to extract information out of your ERP system and automatically populate templates, pivot table and charts.

Improved productivity. Get improved productivity in document production with automatic population of document information.

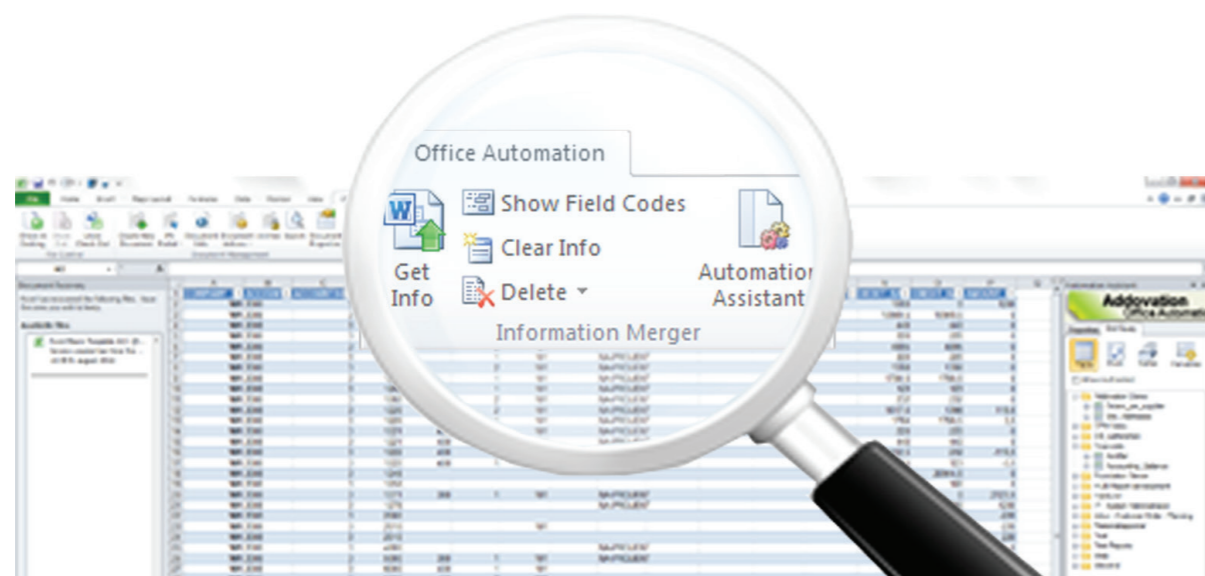
Context sensitive data. Only information that is relevant to the business object is available, which makes it easier to use.

Intuitive user interface. Run IFS from Microsoft Office when you are working in Microsoft Office.

Flexibility. Configurable fetch of information tables in documents.

World Class Integration. Take IFS Document Management to another level. World class integration between the ERP system and Microsoft Office.

Accuracy. Data incorporated in document fetched directly from IFS.



Optimizing Business.
Freeing up Time.



Addovation improves user experience by providing Microsoft Office as a user interface for IFS Applications. The solutions blend IFS Applications with Microsoft Office combining productivity with business data and processes.

Easier Reports. Present the data using the powerful features of MS Excel such as graphs or pivot charts, or as tables in MS Word.

Automatic Population. Documents are automatically populated with relevant data.

Drag & Drop. Super-users may design automated documents with a simple drag & drop interface.

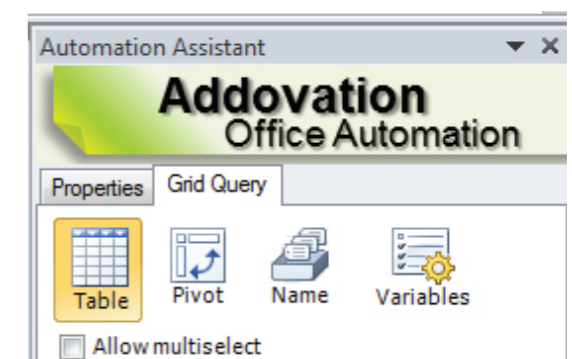
Better Templates. Automated documents provide end-users with powerful templates that are easy to use.

Less Work. Avoid typing existing information over and over again.

Increased efficiency. Taking your productivity to another level.

In Short

- ✓ *Less Work*
- ✓ *Accuracy*
- ✓ *Automatic Population*
- ✓ *Drag & Drop*
- ✓ *Easier Reports*
- ✓ *Better Templates*



Optimizing Business.
Freeing up Time.